

WELSH BACCALAUREATE QUALIFICATION

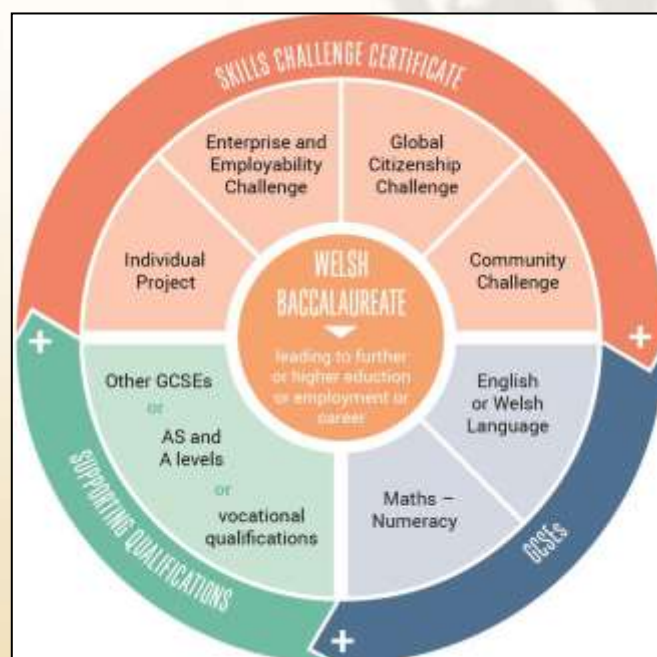
The central focus of the Welsh Baccalaureate at Key Stage 4 is to provide a vehicle for 14-16 year olds to consolidate and develop essential and employability skills. The qualification will help learners to prepare for their future by developing skills, attributes and behaviours valued by post-16 educators and potential employers. The emphasis in the Welsh Baccalaureate is on applied learning i.e. acquiring and applying a range of transferable skills. Learners will develop skills in the context of purposeful tasks and appropriate knowledge and understanding. The Welsh Baccalaureate will encourage the learner to value skills development as a key aspect of education and life-long learning. Offering a learning experience relevant to the needs and demands of the workplace will develop learners' confidence, drive and initiative, preparing them to enter, succeed and progress in the world of work.

Through the Welsh Baccalaureate learners will raise their skills levels and confidence, enabling and empowering them to take their place as responsible and active citizens within a diverse society. The following Skills will be developed, applied and assessed throughout the course.

- Literacy
- Numeracy
- Digital Literacy
- Critical Thinking & Problem Solving
- Planning & Organisation
- Creativity & Innovation

Alongside and through the development of skills, the Welsh Baccalaureate provides learners with the opportunity to develop their knowledge and understanding of society, the community in which they live and an awareness of global issues, events and perspectives.

The Welsh Baccalaureate is based on a **Skills Challenge Certificate** alongside **Supporting Qualifications**. The requirements of both the Skills Challenge Certificate and Supporting Qualifications must be met in order to achieve the overarching Welsh Baccalaureate.



WELSH BACCALAUREATE QUALIFICATION

The **Skills Challenge Certificate**, which is at the heart of the course, consists of four Challenges which are followed by all learners:

- **Enterprise and Employability Challenge** - Develop enterprising skills and qualities which will enhance employability.
- **Global Citizenship Challenge** - Provide learners with an understanding of Global issues and how they can respond to them.
- **Community Challenge** - Learners have the opportunity to participate in activities that will benefit the community.
- **Individual Project** - Develop skills, through carrying out a research activity in an area of personal interest.

The combined outcomes of the four challenges will determine whether the Skills Challenge Certificate is awarded at National or Foundation level. The Skills Challenge Certificate National Award will be graded A*-C and is a GCSE equivalent qualification.

As well as the **Skills Challenge Certificate** learners must achieve the **Supporting Qualifications**.

The **Supporting Qualifications** include two mandatory GCSEs of English Language or Welsh Language together with Mathematics or Numeracy. A further three GCSEs are also required, of which two may be of equivalent qualifications.

To meet the National Welsh Baccalaureate requirements all five of the Supporting Qualifications must be achieved at grades A*-C. Similarly, for the Foundation Welsh Baccalaureate the Supporting Qualifications must be achieved at grades A*-G.

Further information about the new Welsh Baccalaureate can be found on the following links:

<http://www.wjec.co.uk/qualifications/welsh-baccalaureate/welsh-bacc-from-2015/>

<http://qualifiedforlife.org.uk/>